

BOARD TO BOARD/WIRE

- Compatible with other leading manufacturers
- Competitively priced
- Tin plated contacts
- 04-26 contacts

MINIATURE RIBBON CABLE SYSTEM - CABLE SOCKET



SECTION 8

SPECIFICATION

Material & Finish

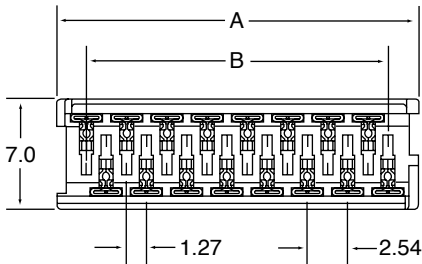
Insulator: PTB, glass reinforced , rated UL 9V-0
Contact: Phosphor Bronze

Electrical Characteristics

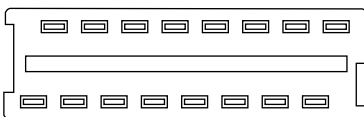
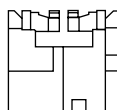
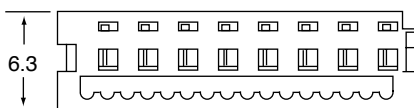
Rating Current: 1 Amp DC
Contact Resistance: 30 mΩ max.
Insulation Resistance: 3000 MΩ min.
Dielectric Voltage: 500v AC for 1 minute
Operating Temperature: -40°C to +105°C

*Terminated with 1.27mm pitch flat ribbon cable.
 *Mating suggestion: A33b, A33c series

OUTLINE DRAWING



| Position | A | B |
|----------|-------|-------|
| 4 | 7.59 | 3.81 |
| 6 | 10.13 | 6.35 |
| 8 | 12.67 | 8.89 |
| 10 | 15.21 | 11.43 |
| 12 | 17.75 | 13.97 |
| 14 | 20.39 | 16.51 |
| 16 | 22.83 | 19.05 |
| 18 | 25.37 | 21.59 |
| 20 | 27.91 | 24.13 |
| 26 | 35.53 | 31.75 |



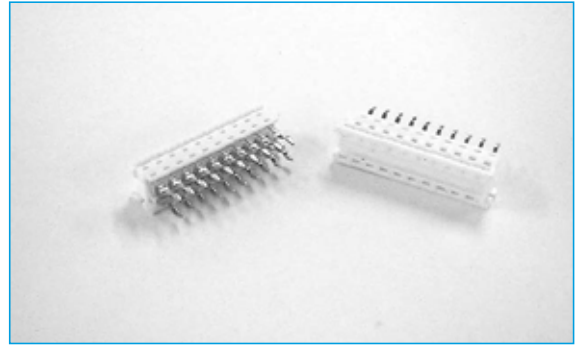
ORDERING INFORMATION

| DBC | A33 | 10 | B | T | 5 |
|---------------------|--------|--|---------------------|-----------------|-----------|
| Dubilier Connectors | Series | No. of Contacts | Contact Material | Contact Plating | Colour |
| | | 04 = 04 way 06 = 06 way 08 = 08 way 10 = 10 way 12 = 12 way 14 = 14 way 16 = 16 way 18 = 18 way 20 = 20 way 26 = 26 way | B = Phosphor Bronze | T = Tin Plating | 5 = White |

BOARD TO BOARD/WIRE

- Compatible with other leading manufacturers
- Competitively priced
- Tin plated contacts
- 04-26 contacts

MINIATURE RIBBON CABLE SYSTEM - PCB WIRE MOUNT DIP PLUG



SPECIFICATION

Material & Finish

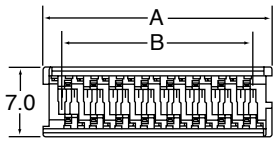
Insulator: PTB, glass reinforced , rated UL 9V-0
Contact: Phosphor Bronze

Electrical Characteristics

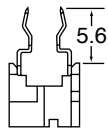
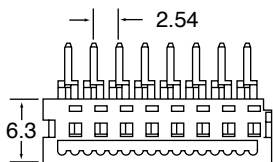
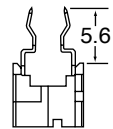
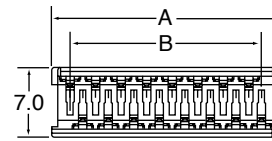
Rating Current: 1 Amp DC
Contact Resistance: 30 mΩ max.
Insulation Resistance: 3000 MΩ min.
Dielectric Voltage: 500v AC for 1 minute
Operating Temperature: -40°C to +105°C

*Terminated with 1.27mm pitch flat ribbon cable.

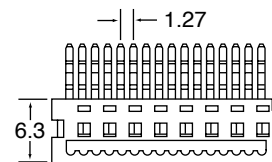
OUTLINE DRAWING



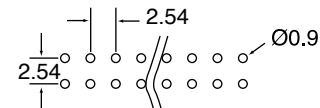
| Position | A | B |
|----------|-------|-------|
| 4 | 7.59 | 3.81 |
| 6 | 10.13 | 6.35 |
| 8 | 12.67 | 8.89 |
| 10 | 15.21 | 11.43 |
| 12 | 17.75 | 13.97 |
| 14 | 20.39 | 16.51 |
| 16 | 22.83 | 19.05 |
| 18 | 25.37 | 21.59 |
| 20 | 27.91 | 24.13 |
| 26 | 35.53 | 31.75 |



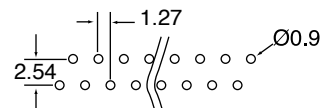
(TYPE A)



(TYPE B)



RECOMMENDED PCB LAYOUT



RECOMMENDED PCB LAYOUT

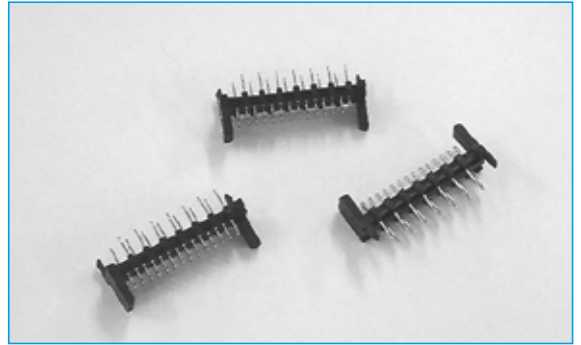
ORDERING INFORMATION

| DBC | A33A | 10 | B | T | B | 5 |
|---------------------|--------|--|---------------------|-----------------|--------------------------|-----------|
| Dubilier Connectors | Series | No. of Contacts | Contact Material | Contact Plating | Footprint | Colour |
| | | 04 = 04 way 06 = 06 way 08 = 08 way 10 = 10 way 12 = 12 way 14 = 14 way 16 = 16 way 18 = 18 way 20 = 20 way 26 = 26 way | B = Phosphor Bronze | T = Tin Plating | A = 2.54mm B = 1.27mm | 5 = White |

BOARD TO BOARD/WIRE

- Compatible with other leading manufacturers
- Competitively priced
- Tin plated contacts
- 2.54mm pitch
- 04-26 contacts

MINIATURE RIBBON CABLE SYSTEM - PCB HEADER VERTICAL



SECTION 8

SPECIFICATION

Material & Finish

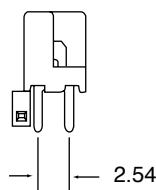
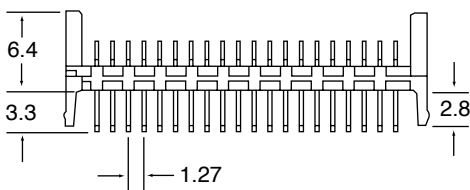
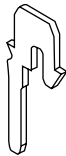
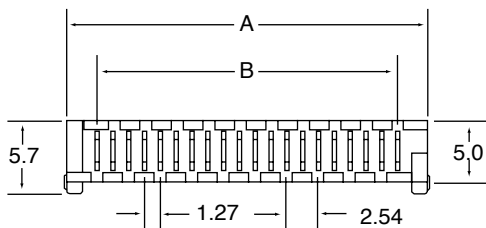
Insulator: PTB, glass reinforced , rated UL 9V-0
Contact: Phosphor Bronze

Electrical Characteristics

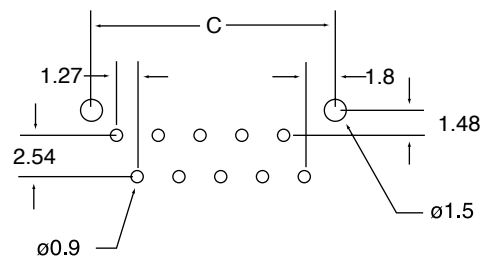
Rating Current: 1 Amp DC
Contact Resistance: 30 mΩ max.
Insulation Resistance: 3000 MΩ min.
Dielectric Voltage: 500v AC for 1 minute
Operating Temperature: -40°C to +105°C

*Mating suggestion: A33 series.

OUTLINE DRAWING



| Position | A | B | C |
|----------|-------|-------|-------|
| 4 | 8.86 | 3.81 | 7.41 |
| 6 | 11.40 | 6.35 | 9.95 |
| 8 | 13.94 | 8.89 | 12.49 |
| 10 | 16.48 | 11.43 | 15.03 |
| 12 | 19.02 | 13.97 | 17.57 |
| 14 | 21.56 | 16.51 | 20.11 |
| 16 | 24.10 | 19.05 | 22.65 |
| 18 | 26.64 | 21.59 | 25.19 |
| 20 | 29.18 | 24.13 | 27.73 |
| 26 | 36.80 | 31.75 | 35.35 |



RECOMMENDED PCB LAYOUT

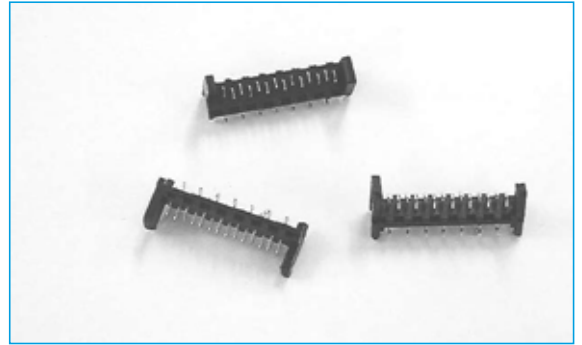
ORDERING INFORMATION

| DBC | A33B | 10 | B | T | 1 |
|---------------------|--------|--|---------------------|-----------------|-----------|
| Dubilier Connectors | Series | No. of Contacts | Contact Material | Contact Plating | Colour |
| | | 04 = 04 way 06 = 06 way 08 = 08 way 10 = 10 way 12 = 12 way 14 = 14 way 16 = 16 way 18 = 18 way 20 = 20 way 26 = 26 way | B = Phosphor Bronze | T = Tin Plating | 1 = Black |

BOARD TO BOARD/WIRE

- Compatible with other leading manufacturers
- Competitively priced
- Tin plated contacts
- 2.54mm pitch
- 04-26 contacts

MINIATURE RIBBON CABLE SYSTEM - SMT PCB HEADER STRAIGHT



SPECIFICATION

Material & Finish

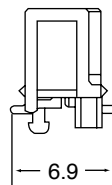
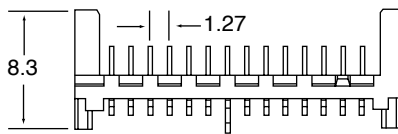
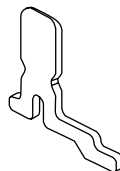
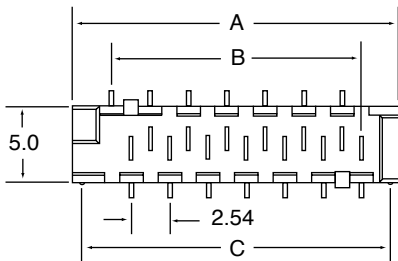
Insulator: Nylon 6T, glass reinforced , rated UL 9V-0
Contact: Phosphor Bronze

Electrical Characteristics

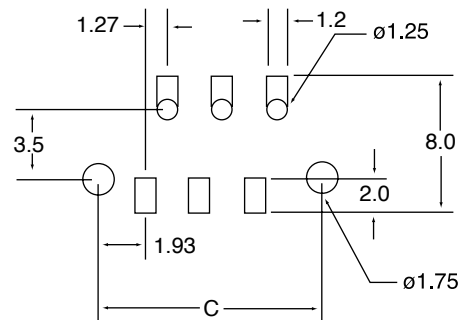
Rating Current: 1 Amp DC
Contact Resistance: 30 mΩ max.
Insulation Resistance: 3000 MΩ min.
Dielectric Voltage: 500v AC for 1 minute
Operating Temperature: -40°C to +105°C

*Mating suggestion: A33 series.

OUTLINE DRAWING



| Position | A | B | C |
|----------|-------|-------|-------|
| 4 | 8.86 | 3.81 | 7.66 |
| 6 | 11.40 | 6.35 | 10.20 |
| 8 | 13.94 | 8.89 | 12.74 |
| 10 | 16.48 | 11.43 | 15.28 |
| 12 | 19.02 | 13.97 | 17.82 |
| 14 | 21.56 | 16.51 | 20.36 |
| 16 | 24.10 | 19.05 | 22.90 |
| 18 | 26.64 | 21.59 | 25.44 |
| 20 | 29.18 | 24.13 | 27.98 |
| 26 | 36.80 | 31.75 | 35.60 |



RECOMMENDED PCB LAYOUT

ORDERING INFORMATION

| DBC | A33C | 10 | B | T | 1 |
|---------------------|--------|--|---------------------|-----------------|-----------|
| Dubilier Connectors | Series | No. of Contacts | Contact Material | Contact Plating | Colour |
| | | 04 = 04 way 06 = 06 way 08 = 08 way 10 = 10 way 12 = 12 way 14 = 14 way 16 = 16 way 18 = 18 way 20 = 20 way 26 = 26 way | B = Phosphor Bronze | T = Tin Plating | 1 = Black |