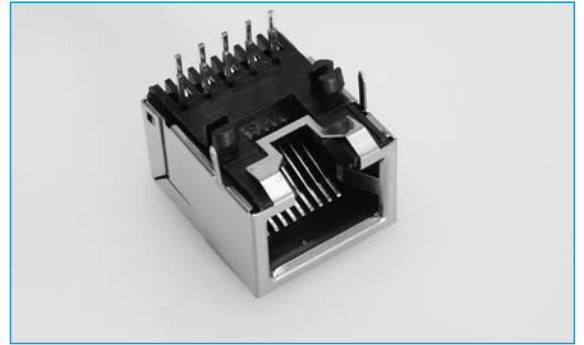


NETWORKING SOCKETS

- 6- 10 ways available
- Board solderable
- Shielded
- Competitively priced

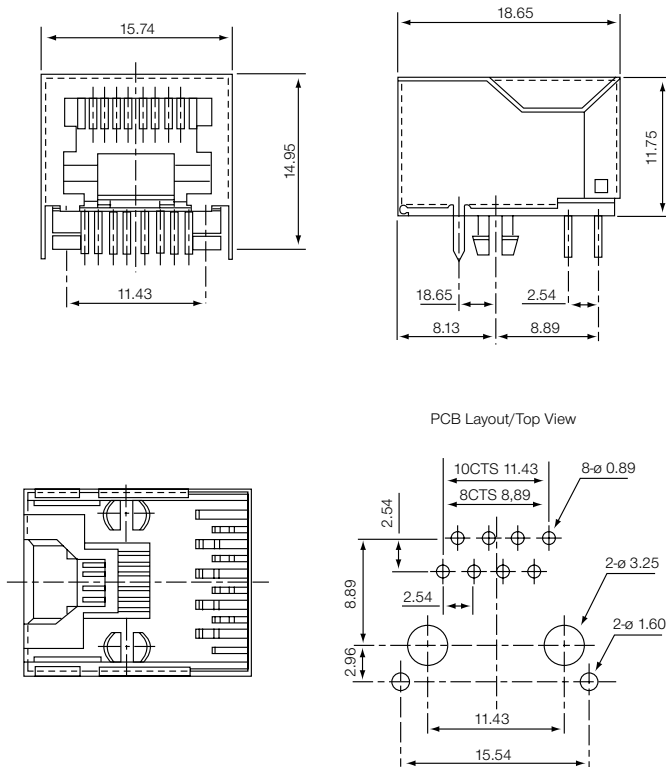
MINI LOW PROFILE SIDE ENTRY PCB JACK - SHIELDED



SPECIFICATION

Current Rating	3A
Contact Resistance	30mΩ max at DC 100mA
Dielectric withstanding Voltage	AC 500V for 1 minute
Insulation Resistance	1000mΩ min at DC 500V
Plating	Selective gold plating over Nickel Tin plate on solder foils
Housing	UL94V-0
Contact	0.35mm Phosphor Bronze
Operating Temperature	-55 °C to +105 °C

OUTLINE DRAWING



ORDERING INFORMATION

DBC	RJ	S	64	H
Dubilier Connectors	Series	Contact Type S = Socket	No. of Ways x No. of Loaded Contacts 6 x 4 6 x 6 8 x 8 10 x 10	Style H = Mini Low Profile Side Entry PCB Jack - Shielded