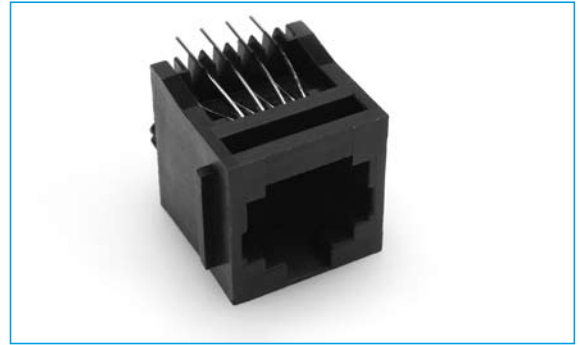


NETWORKING SOCKETS

- 4 - 8 ways available
- Selective loading of contacts
- Board solderable
- Competitively priced.

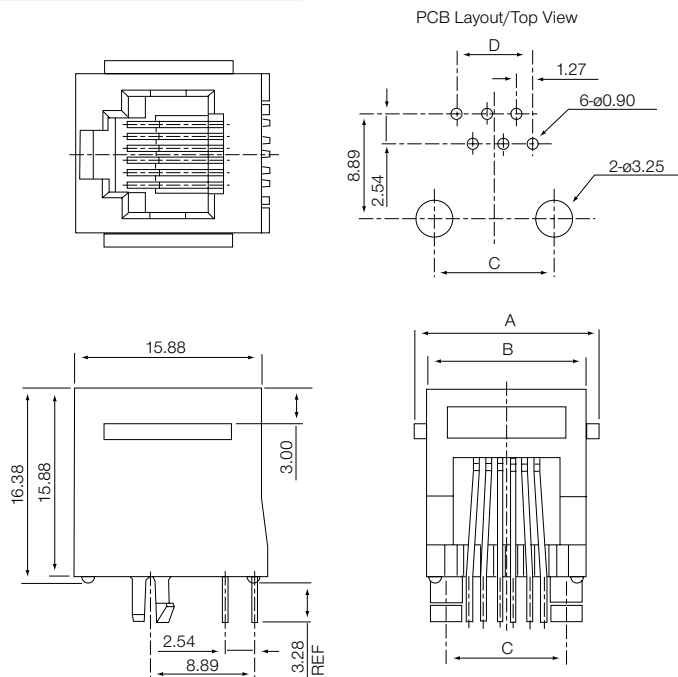
TOP ENTRY PCB JACK



SPECIFICATION

Current Rating	3A
Contact Resistance	30mΩ max at DC 100mA
Dielectric withstanding Voltage	AC 500V for 1 minute
Insulation Resistance	1000mΩ min at DC 500V
Plating	Selective gold plating over Nickel Tin plate on solder foils
Housing	UL94V0 Standard
Colour	Black
Contact	0.35mm Phosphor bronze
Operating Temperature	-55 °C to +105 °C

OUTLINE DRAWING



No of Positions	Dimensions			
	A	B	C	D
4	13.97	11.43	7.62	3.81
6	15.75	13.46	10.16	6.35
8	17.65	15.36	11.43	8.89

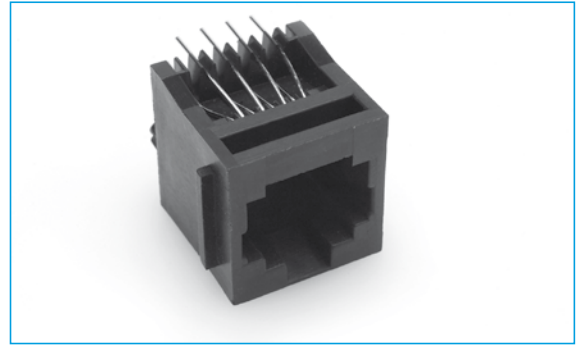
ORDERING INFORMATION

DBC	RJ	S	86	F
Dubilier Connectors	Series	Contact Type S = Socket	No. of Ways x No. of loaded contacts 4 x 4 6 x 4 6 x 6 8 x 6 8 x 8	Style F = Top Entry PCB Jack

NETWORKING SOCKETS

- Top entry
- 4, 6, 8 way available
- Board solderable
- Competitively priced
- Stocked line

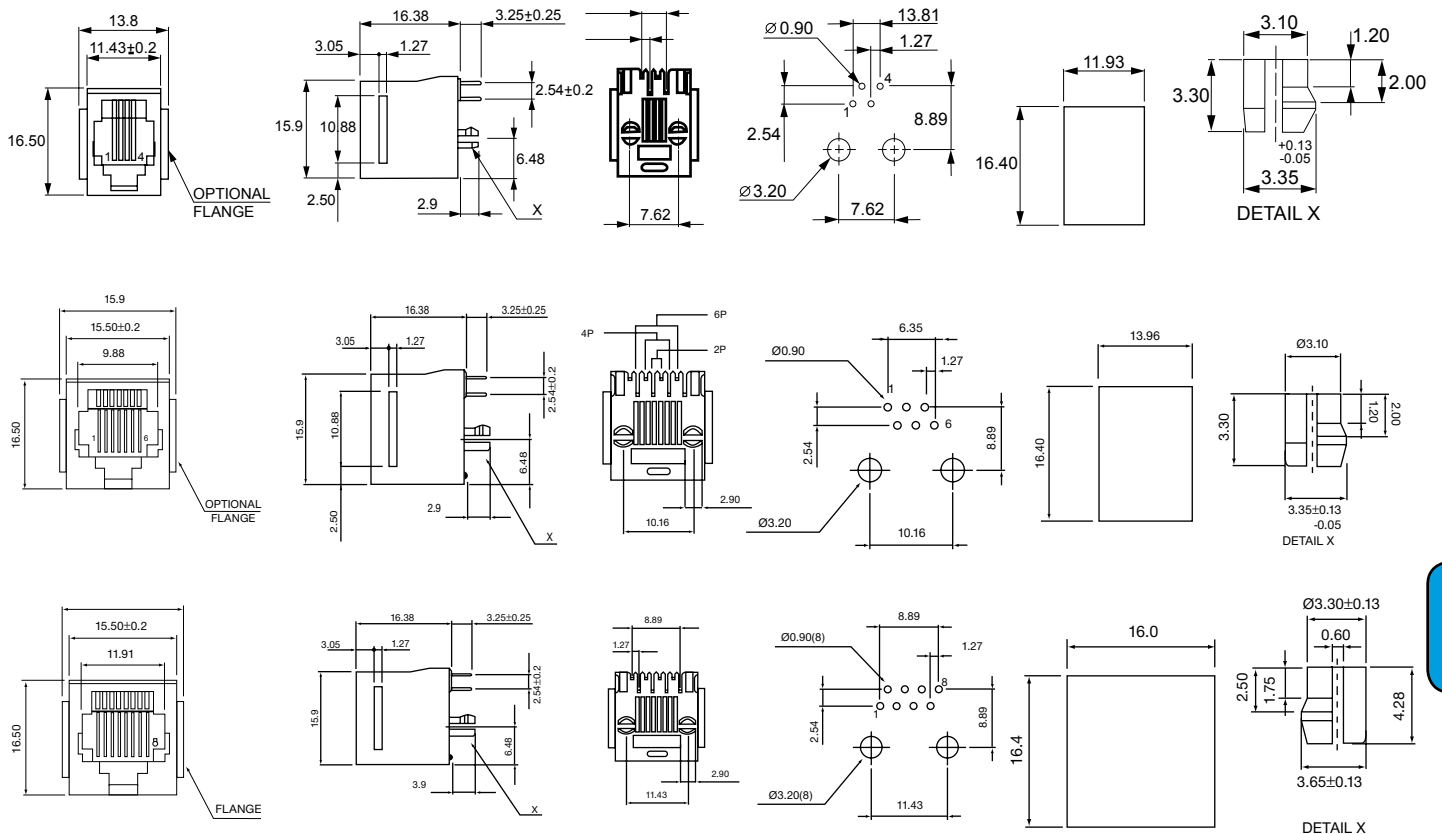
TOP ENTRY PCB JACK



SPECIFICATION

Current Rating	3A
Contact Resistance	30mΩ max at DC 100mA
Dielectric withstanding Voltage	AC 500V for 1 minute
Insulation Resistance	1000mΩ min at DC 500V
Plating	Selective gold plating over Nickel Tin plate on solder foils
Housing	UL94V0 Standard
Colour	Black and Grey
Contact	0.35mm Phosphor bronze
Operating Temperature	-55°C to +105°C

OUTLINE DRAWING



ORDERING INFORMATION

DBC	RJ20ES	1	0011
Dubilier Connectors	Series	Colour 1 = Black 5 = Grey	No. of Ways 0411=4way 0611=6way 0011=8way