



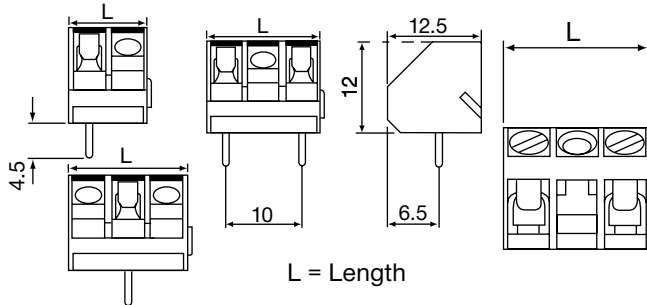
TERMINAL BLOCKS

- 10mm pitch
- Flame retardant material
- 4mm² wire acceptance
- UL/ CSA approved
- Professional rising clamp

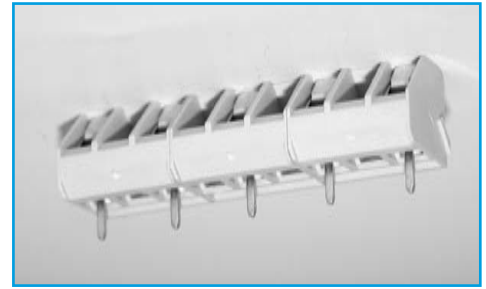
SPECIFICATION

Rating:	17.5A/750V
Dielectric Strength:	≥1.25KV/60sec
Insulation Resistance:	≥5MΩ
Working temperature:	-20°C to 125°C
Short Period:	160°C
Moulding:	UL94V-0 flame retardant PA66
Pin/terminal:	5μ tinned, nickel plated brass

OUTLINE DRAWING



10mm PITCH 45° MOUNT



Rising clamp:	Zinc plated steel
Screw/torque:	M2.5 steel, 6μ zinc colour passivated and tropicalised/0.4Nm
Recommended PCB hole size:	ø1.3mm

ORDERING INFORMATION

DBC	TB	57	/2
Dubilier Connectors	Series Terminal Block	Style	Nº of Ways 2 = 2 ways 3 = 3 ways

TERMINAL BLOCKS

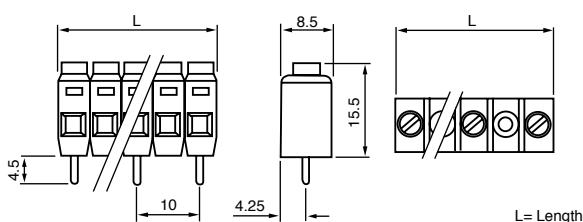
- 10mm pitch
- Professional rising clamp terminal
- 18 pole strip
- 4mm² wire acceptance
- UL/CE/VDE approved
- Easily cut to required number of poles

SPECIFICATION

Electrical Characteristics

Rating Current:	17.5A/750V
Dielectric Voltage:	≥ 2.5KV/60sec
Insulation Resistance:	≥ 5MΩ
Operating Temperature:	-20°C to +125°C
Short Period:	160°C

OUTLINE DRAWING



10MM PITCH 18 POLE RISING CLAMP



Moulding:	UL94-V0 flame retardant Lexan
Pin/terminal:	5μ tinned, nickel plated brass
Rising clamp:	Zinc plated steel
Screw/torque:	M2.5 steel, 6μ zinc colour passivated and tropicalised/0.4Nm
Recommended PCB hole size:	ø1.3mm

ORDERING INFORMATION

DBC	TB	25	/2
Dubilier Connectors	Series Terminal Blocks	Style	No of Ways 2 = 2ways 3 = 3ways

* other number of ways are available
Please consult the office for further details

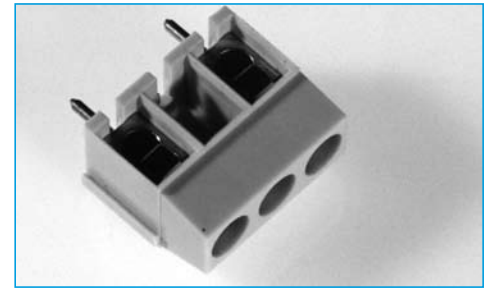
TERMINAL BLOCKS

- 10mm Pitch 1-12 pole
- 1 and 2 Pole interlocking
- 1 pole in 10mm and 15mm length
- Moulded in UL94V-0 Flame retardant material
- 2.5mm² wire acceptance
- Screw terminal
- UL/VDE/CE approved

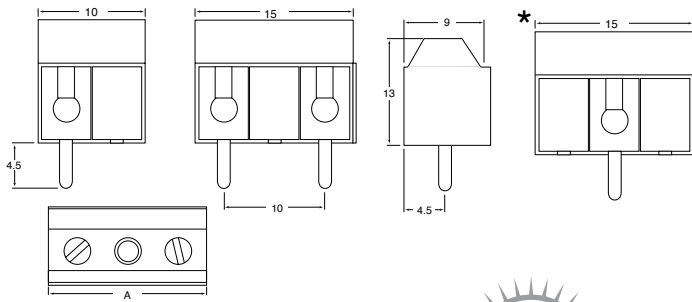
SPECIFICATION

Rating: 17.5A/380 Vac
Dielectric Strength: >2.5KV
Insulation Resistance: >5MΩ
Working temperature: -20°C to 125°C
Moulding: UL94V-0 flame retardant Lexan
Pin/terminal: 5 micron tinned nickel plated brass

Wire Protect: Tin plated phosphor bronze
Screw/torque: M3 steel/0.5Nm 7 micron zinc colour passivated and tropicalised
Recommended PCB hole size: ø1.1mm



OUTLINE DRAWING



ORDERING INFORMATION

DBC	TB	11	/2	/2
Dubilier Connectors	Series Terminal Block	Style	N° of Ways 2 = 2 ways 3 = 3 ways	Options Blank = STD *15 = 15mm Length on 1 way

* Other Number of ways are available up to 24
Please consult office for further details

TERMINAL BLOCKS



- 10mm pitch
- Flame retardant material
- Screw terminal
- 2.5mm² wire acceptance
- UL/CE/ VDE approved

SPECIFICATION

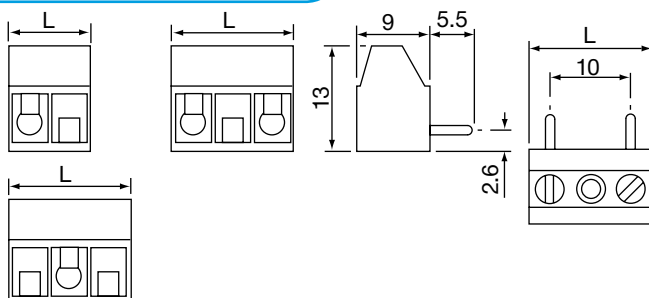
Rating: 17.5A/750V
Dielectric Strength: ≥2.5KV/60sec
Insulation Resistance: ≥5MΩ
Working temperature: -20°C to 125°C
Moulding: UL94V-0 flame retardant Lexan
Pin/terminal: 5μ tinned, nickel plated brass
Wire protector: Tin plated phosphor bronze

Screw/torque: M3 steel, 6 μ zinc colour passivated and tropicalised/0.5Nm
Recommended PCB hole size: ø1.1mm

10mm PITCH 90° MOUNT



OUTLINE DRAWING



ORDERING INFORMATION

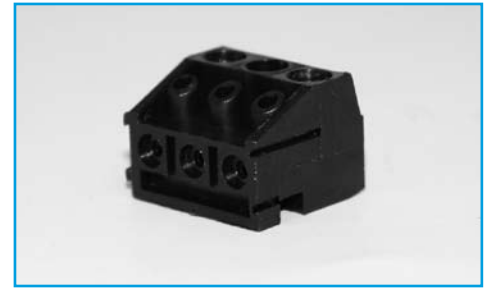
DBC	TB	48	/2
Dubilier Connectors	Series Terminal Block	Style	N° of Ways 2 = 2 ways 3 = 3 ways



TERMINAL BLOCKS

10mm PITCH PLUG IN VERTICAL OR HORIZONTAL

- 10mm pitch
- Interlocking
- Test Probe facility
- Horizontal or vertical mounting
- 1.5mm² wire acceptance
- UL/ CSA approved

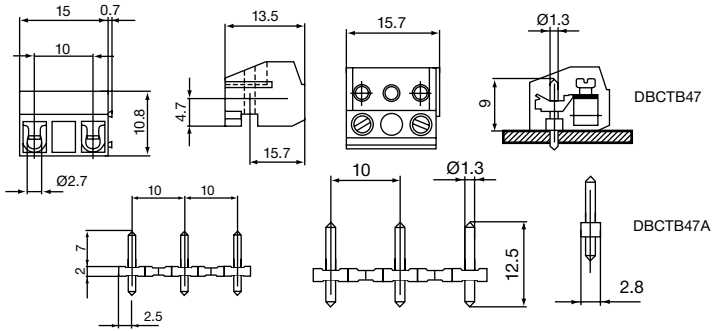


SPECIFICATION

Rating: 10A/750V
Dielectric Strength: ≥2.5KV/60sec
Insulation Resistance: ≥5MΩ
Working temperature: -33°C to 125°C
Short Period: 160°
Moulding: UL94V-0 flame retardant glass filled polyester

Pin/terminal: 5μ tinned, copper flashed brass
Wire protector: Beryllium copper
Screw/torque: M2.6 steel, zinc & colour passivated and tropicalised/0.4Nm

OUTLINE DRAWING



ORDERING INFORMATION

DBC	TB	47	/2
Dubilier Connectors	Series	Style	N° of Ways
	Terminal Block	47=Style 47 47A=Style 47A	2 = 2 ways 3 = 3 ways

* Other Number of ways are available up to 12
Please consult office for further details