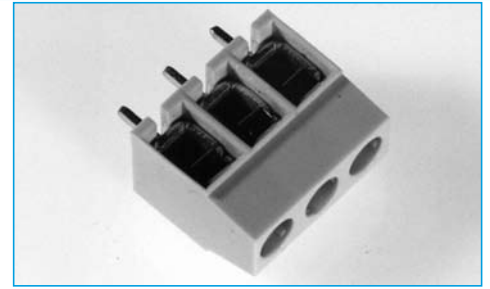


TERMINAL BLOCKS

- 5mm Pitch
- 2 and 3 pole interlocking
- 4-12 pole solid, end stackable
- Screw terminal
- UL94v-0 Flame retardant material
- 2.5mm² wire acceptance
- UL/VDE approved

5mm PITCH VERTICAL MOUNT

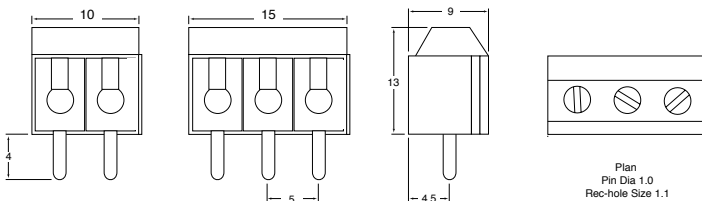


SPECIFICATION

Rating: 17.5A/380V
Dielectric Strength: >2.5KV
Insulation Resistance: >5MΩ
Working temperature: -20°C to 125°C
Short Period: 160°
Moulding: UL94V-0 flame retardant Lexan

Pin/terminal: 5 micron tinned nickel plated brass
Wire protect: Tin plated phosphor bronze
Screw/torque: M3 steel/0.5Nm 7 micron zinc colour passivated and tropicalised
Recommended PCB hole size: ø1.1mm

OUTLINE DRAWING



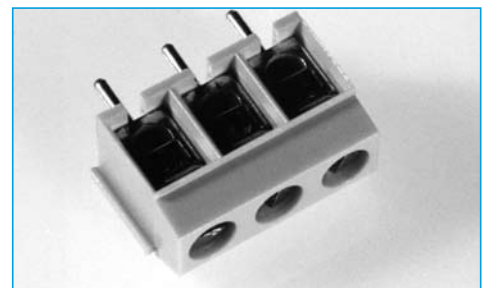
ORDERING INFORMATION

DBC	TB	2	/2
Dubilier Connectors	Series Terminal Block	Style	N° of Ways
			2 = 2 ways 3 = 3 ways
			* Other Number of ways are available up to 12 Please consult office for further details

TERMINAL BLOCKS

- Low profile
- 2-12 Pole interlocking
- UL94V-0 Flame retardant material
- Test probe facility
- 1.5mm² wire acceptance
- Screw terminal
- UL/VDE/CE approved

5mm PITCH VERTICAL MOUNT - LOW PROFILE

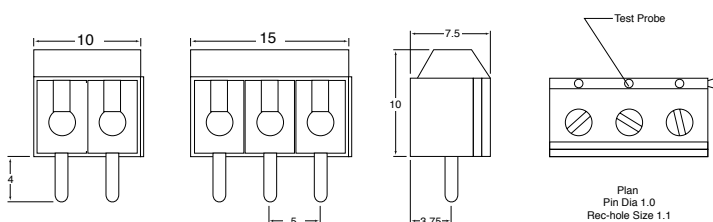


SPECIFICATION

Rating: 16A/250V
Dielectric Strength: >2KV
Insulation Resistance: >5MΩ
Working temperature: -20°C to 125°C
Short Period: 160°
Moulding: UL94V-0 flame retardant Lexan

Pin/terminal: 5 micron tinned nickel plated brass
Wire protect: Tin plated phosphor bronze
Screw/torque: M2.5 steel/0.4Nm 7 micron zinc colour passivated and tropicalised
Recommended PCB hole size: ø1.1mm

OUTLINE DRAWING



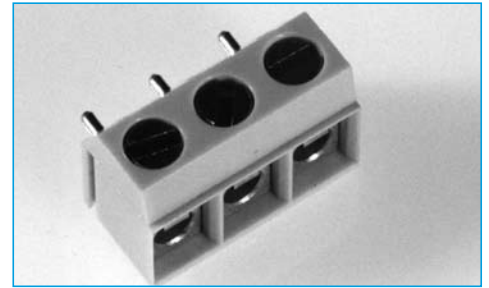
ORDERING INFORMATION

DBC	TB	3	/2
Dubilier Connectors	Series Terminal Block	Style	N° of Ways
		3=Grey 3A=Black	2 = 2 ways 3 = 3 ways
			* Other Number of ways are available up to 12 Please consult office for further details

TERMINAL BLOCKS

- Low profile
- 2-12 Pole interlocking
- UL94V-0 Flame retardant material
- Test probe facility
- 1.5mm² wire acceptance
- Screw terminal
- UL/CE approved

5mm PITCH 90° MOUNT - LOW PROFILE

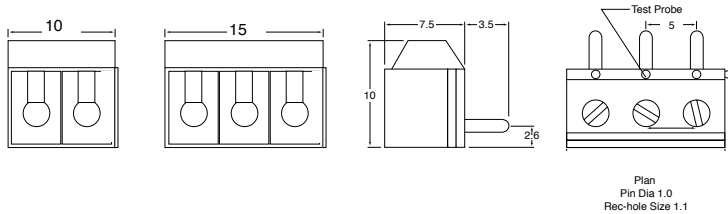


SPECIFICATION

Rating: 16A/150V
Dielectric Strength: >2KV
Insulation Resistance: >5MΩ
Working temperature: -20°C to 125°C
Short Period: 160°
Moulding: UL94V-0 flame retardant Lexan

Pin/terminal: 5 micron tinned nickel plated brass
Wire Protect: Tin plated phosphor bronze
Screw/torque: M2.5 steel/0.4Nm 7 micron zinc colour passivated and tropicalised
Recommended PCB hole size: ø1.1mm

OUTLINE DRAWING



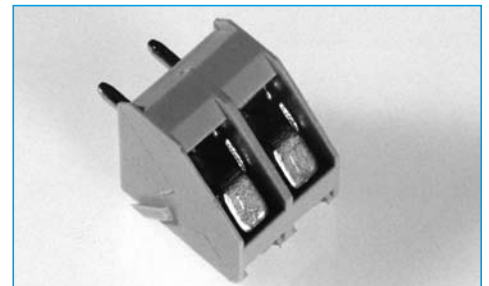
ORDERING INFORMATION

DBC	TB	4	/2
Dubilier Connectors	Series Terminal Block	Style	N° of Ways 2 = 2 ways 3 = 3 ways
* Other Number of ways are available up to 12 Please consult office for further details			

TERMINAL BLOCKS

- 45° Mounting 5mm pitch
- 2-12 Pole interlocking
- Professional series rising clamp - Designed to prevent cable entry below clamp
- 4mm² wire acceptance
- Captive screws
- To VDE 0110
- UL/VDE/CE approved

5mm 45° MOUNT - RISING CLAMP

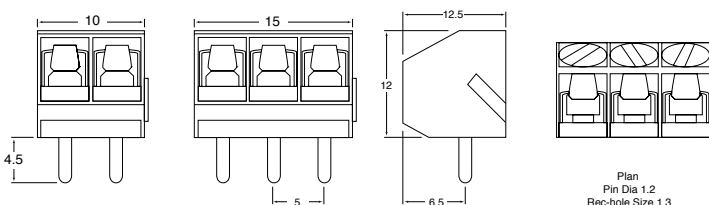


SPECIFICATION

Rating: 17.5A/250V
Dielectric Strength: >1.25KV
Insulation Resistance: >5MΩ
Working temperature: -20°C to 125°C
Short Period: 160°
Moulding: UL94V-0 flame retardant nylon 66

Pin/terminal: 5 micron tinned nickel plated brass
Rising clamp: Zinc plated steel
Screw/torque: M2.5 steel/0.4Nm 7 micron zinc colour passivated and tropicalised
Recommended PCB hole size: ø1.3mm

OUTLINE DRAWING



ORDERING INFORMATION

DBC	TB	5	/2
Dubilier Connectors	Series Terminal Block	Style 5=Grey 5A=Black	N° of Ways 2 = 2 ways 3 = 3 ways
* Other Number of ways are available up to 12 Please consult office for further details			

SECTION 18

TERMINAL BLOCKS

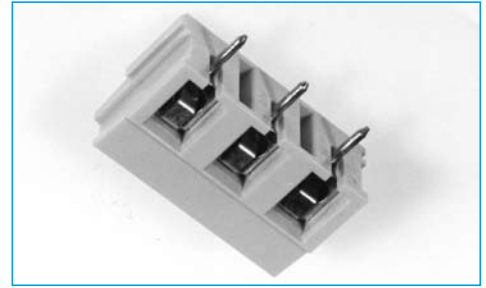
- 5.00mm pitch
- Professional rising clamp
- 1.5mm² wire acceptance
- Rating 17.5A/250V
- UL/CE approved
- Interlocking
- Colour green

SPECIFICATION

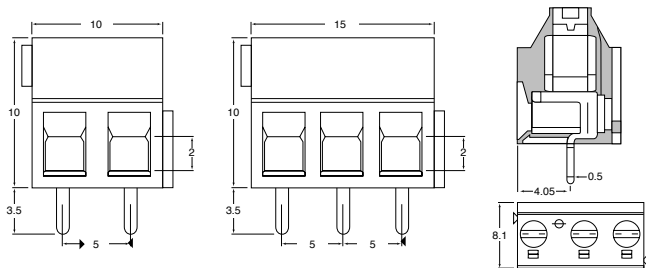
Rating: 17.5A/250Volts
Dielectric Strength: >2KV
Insulation Resistance: >5MΩ
Working temperature: -20°C to 125°C
Short Period: 160°
Moulding: UL94V-0 flame retardant nylon 66

Pin/terminal: 5 micron tinned nickel plated brass
Rising clamp: Nickel plated brass
Screw/torque: M3 Zinc steel/0.5Nm colour passivated and tropicalised
Recommended PCB hole size: ø1.3mm²

5mm PITCH VERTICAL MOUNT - LOW PROFILE



OUTLINE DRAWING



ORDERING INFORMATION

DBC	TB	12	/2
Dubilier Connectors	Series Terminal Block	Style	N° of Ways
			2 = 2 ways 3 = 3 ways
			* Other Number of ways are available up to 12 Please consult office for further details

TERMINAL BLOCKS

- 5.00mm pitch
- Professional rising clamp - Designed to prevent cable entry below clamp
- 4.0mm² wire acceptance
- Rating 24A/450V
- CE approved
- Colour green
- Interlocking

SPECIFICATION

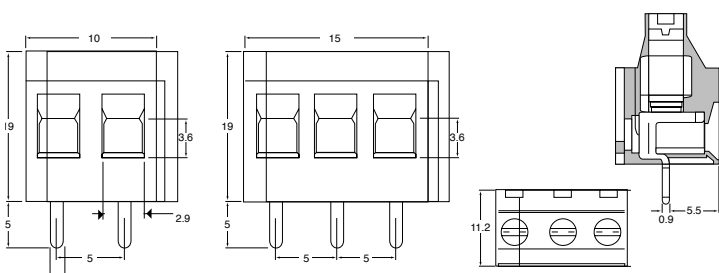
Rating: 24A/450Volts
Dielectric Strength: >2.5KV
Insulation Resistance: >5MΩ
Working temperature: -20°C to 125°C
Short Period: 160°
Moulding: UL94V-0 flame retardant nylon 66

Pin/terminal: 5 micron tinned nickel plated brass
Rising clamp: Nickel plated brass
Screw/torque: M3 Zinc steel/0.5Nm, colour passivated and tropicalised
Recommended PCB hole size: ø1.3mm²

5mm PITCH VERTICAL MOUNT



OUTLINE DRAWING



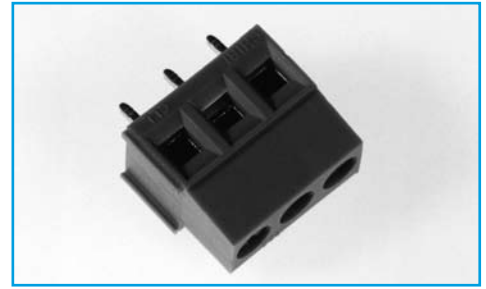
ORDERING INFORMATION

DBC	TB	14	/2
Dubilier Connectors	Series Terminal Block	Style	N° of Ways
			2 = 2 ways 3 = 3 ways
			* Other Number of ways are available up to 12 Please consult office for further details

TERMINAL BLOCKS

- 5.00mm pitch
- Professional rising clamp
- Designed to prevent cable entry below clamp
- 2.5mm² wire acceptance
- Rating 20A/250V
- UL/CE approved
- Colour green
- Interlocking

5mm PITCH VERTICAL MOUNT

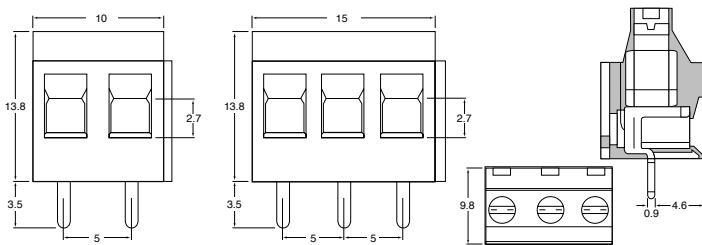


SPECIFICATION

Rating: 20A/250Volts
Dielectric Strength: >2.5KV
Insulation Resistance: >5MΩ
Working temperature: -20°C to 125°C
Short Period: 160°
Moulding: UL94V-0 flame retardant nylon 66

Pin/terminal: 5 micron tinned nickel plated brass
Rising clamp: Nickel plated brass
Screw/torque: M3 Zinc Steel / 0.2Nm, colour passivated and tropicalised
Recommended PCB hole size: ø1.3mm²

OUTLINE DRAWING



ORDERING INFORMATION

DBC	TB	16	/2
Dubilier Connectors	Series Terminal Block	Style	N ^o of Ways 2 = 2 ways 3 = 3 ways

TERMINAL BLOCKS

- 5mm Pitch
- Professional Rising Clamp
- 2 -12 pole interlocking
- 2.5mm² wire acceptance
- UL/CE/VDE approved
- Colour Green

5MM PITCH RISING CLAMP



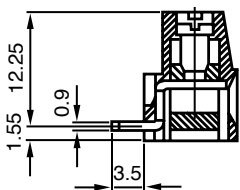
SPECIFICATION

Electrical Characteristics

Rating Current: 20A/250V
Contact Resistance: ≥2.5kV/60secs
Insulation Resistance: ≥5MΩ
Operating Temperature: -20°C to +125°C
Short period: 160°C
Moulding: UL94-V0 flame retardant PA66

Pin/terminal: 5µ tinned, nickel plated brass
Wire clamp: Nickel plated brass
Screw/torque: M3 steel, 6µ zinc colour passivated and tropicalised/0.5Nm
Recommended PCB hole size: ø1.3mm

OUTLINE DRAWING



ORDERING INFORMATION

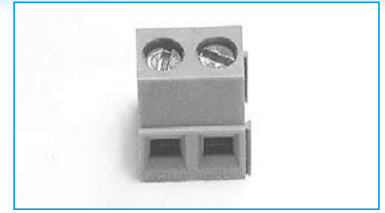
DBC	TB	42	/2
Dubilier Connectors	Series Terminals Blocks	Style	No of Ways 2 = 2ways 3 = 3ways

* other number of ways are available
Please consult the office for further details

TERMINAL BLOCKS

- 5mm Pitch
- Screw Terminal
- 2 - 12 pole end stackable
- 2.5mm² wire acceptance
- UL/CE/VDE approved

5MM PITCH 90° SCREW TERMINAL



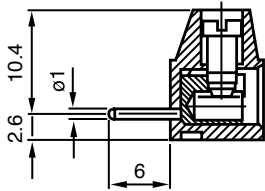
SPECIFICATION

Electrical Characteristics

Rating Current: 17.5A/380V
Contact Resistance: ≥2.5kV/60sec
Insulation Resistance: ≥5MΩ
Operating Temperature: -20°C to +125°C
Short Period: 160°C
Moulding: UL94-V0 flame retardant Lexan

Pin/terminal: 5μ tinned, nickel plated brass
Wire protector: Tin plated phosphor bronze
Screw/torque: M3 steel, 6μ zinc colour passivated and tropicalised/5Nm
Recommended PCB hole size: ø1.1mm

OUTLINE DRAWING



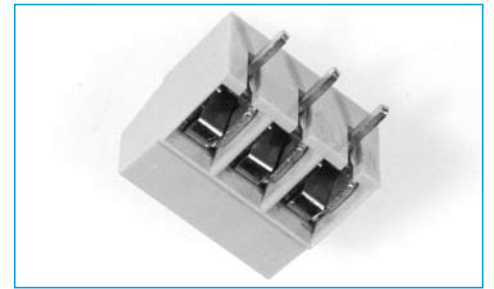
ORDERING INFORMATION

DBC	TB	43	/2
Dubilier Connectors	Series Terminal Blocks	Style	No of Ways 2 = 2ways 3 = 3ways
			* other number of ways are available Please consult the office for further details

TERMINAL BLOCKS

- 5.00 mm pitch
- Stamped insert
- Rating 24A/250V
- UL/VDE/CE approved
- Screw terminal
- 4.0mm² wire acceptance

5mm PITCH VERTICAL MOUNT

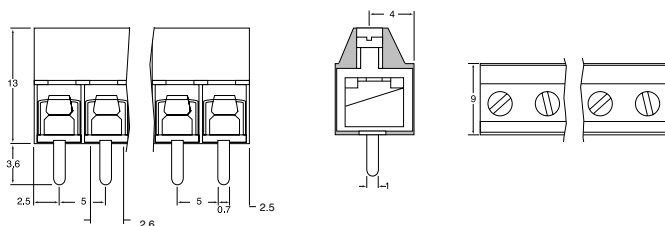


SPECIFICATION

Rating: 24A/250 Vac
Dielectric Strength: >2.5KV
Insulation Resistance: >5MΩ
Working temperature: -20°C to 125°C
Short Period: 160°C
Moulding: UL94V-0 flame retardant nylon 66

Pin/terminal: 5 micron tinned nickel plated brass
Wire Protector: Tin plated phosphor bronze
Screw/torque: M2.5 Zinc Steel / 0.5NM, colour passivated and tropicalised
Recommended PCB hole size: ø1.3mm²

OUTLINE DRAWING



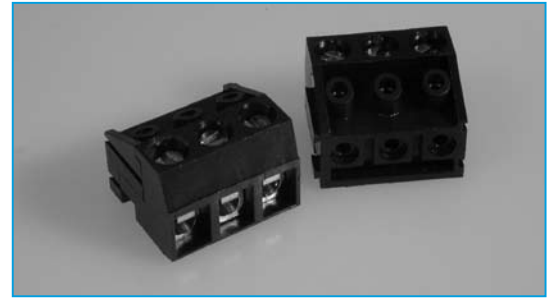
ORDERING INFORMATION

DBC	TB	10	/2
Dubilier Connectors	Series Terminal Block	Style	Nº of Ways 2 = 2 ways 3 = 3 ways
			* Other Number of ways are available up to 24 Please consult office for further details

TERMINAL BLOCKS

- 2-12 Pole Interlocking
- Test probe facility
- Interchangeable
- 1.5mm² wire acceptance
- Horizontal or vertical mounting
- UL/ CSA approved

PLUG - IN 5mm VERTICAL OR HORIZONTAL

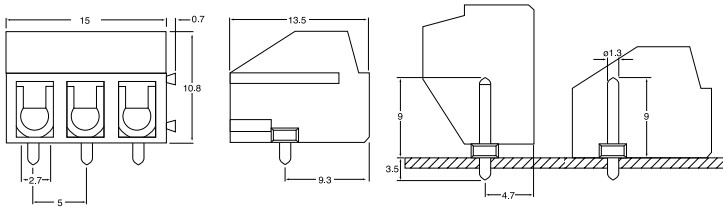


SPECIFICATION

Rating: 10A/380v
Dielectric Strength: >2.5Kv
Insulation Resistance: >5MΩ
Working temperature: -33°C to 120°C
Short Period: 160°

Moulding: UL94V-0 flame retardant glass filled Polyester
Terminal: 5 micron tinned copper flashed brass
Wire Protect: Beryllium copper
Screw/torque: M2.6 steel/4Nm zinc colour passivated & tropicalised

OUTLINE DRAWING



ORDERING INFORMATION

DBC	TB	26	/12
Dubilier Connectors	Series Terminal Block	Style	N° of Ways
			2 = 2 ways 3 = 3 ways
* Other Number of ways are available up to 12 Please consult office for further details			

TERMINAL BLOCKS

- Supplied in 24 Way
- Cut to required size
- Flame retardant material

24 PIN SPACING

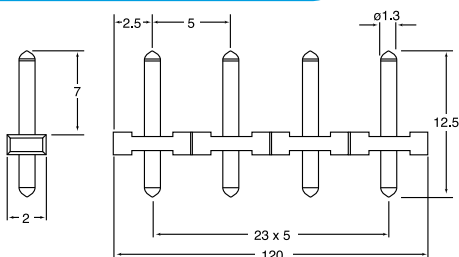


SPECIFICATION

Rating: 10A/380V
Contact resistance: KB 380 according to VDE 0110
Working temperature: -33°C to 120°C
Short Period: 160°
Moulding: UL94V-0 flame retardant glass filled Polyester
Pins: 7 micron tinned, nickel plated brass

Recommended PCB hole size: ø1.5mm

OUTLINE DRAWING



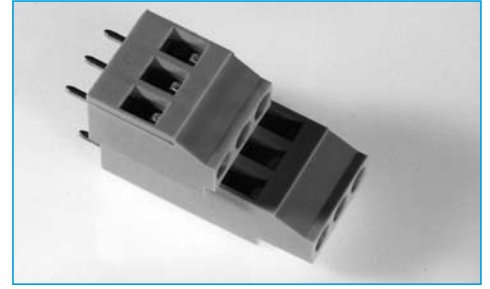
ORDERING INFORMATION

DBC	TB	30	/24
Dubilier Connectors	Series Terminal Block	Style	N° of Ways
			24 = 24 ways(standard)
* Other Number of ways are available up to 24 Please consult office for further details			

TERMINAL BLOCKS

- Vertical double decker
5mm pitch
- 4-6 Pole interlocking
- Professional Rising clamp
- Captive screws
- 4mm² wire acceptance
- UL/ VDE/ CE approved

5mm PITCH DOUBLE DECK - RISING CLAMP

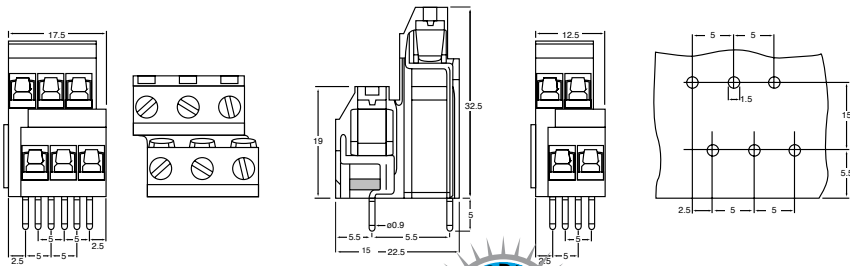


SPECIFICATION

Rating: 24A/380V
Dielectric Strength: >2.5KV
Insulation Resistance: >5MΩ
Working temperature: -20°C to 125°C
Short Period: 160°
Moulding: UL94V-0 flame retardant nylon 66

Pin/terminal: 5 micron tinned nickel plated brass
Rising clamp: 5 micron Nickel brass
Screw/torque: M2 steel/0.5Nm 7 micron zinc colour passivated and tropicalised
Recommended PCB hole size: ø1.3mm

OUTLINE DRAWING



ORDERING INFORMATION

DBC	TB	6	/2
Dubilier Connectors	Series Terminal Block	Style	Nº of Ways
			2 = 2 ways 3 = 3 ways

TERMINAL BLOCKS

- 5mm pitch
- Flame Retardant Material
- 4mm² wire acceptance
- UL/ CE approved
- 36way strip
- Professional rising clamp
- Easily cut to required number of poles



5mm PITCH PLUG IN VERTICAL OR 90°

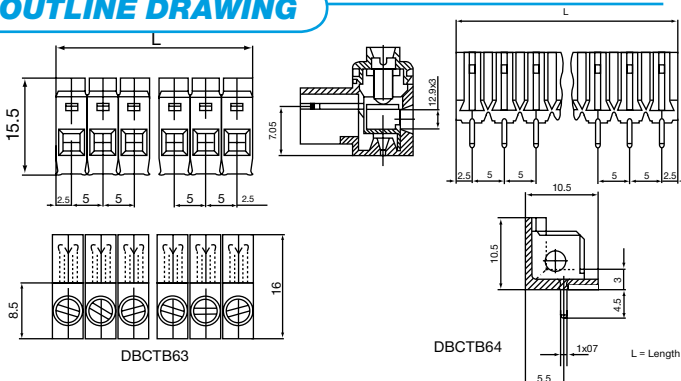


SPECIFICATION

Rating: 13.5A/380V
Dielectric Strength: ≥2.5KV/60sec
Insulation Resistance: ≥5MΩ
Working temperature: -20°C to 125°C
Short Period: 160°
Moulding: UL94V-0 flame retardant Lexan

Pin/terminal: 5µ tinned, nickel plated brass
Wire protector: Zinc plated steel
Screw/torque: M2.5 steel, 6µ zinc colour passivated and tropicalised/0.4Nm
Recommended PCB hole size: ø1.3mm

OUTLINE DRAWING



ORDERING INFORMATION

DBC	TB	63	/2
Dubilier Connectors	Series Terminal Block	Style	Nº of Ways
		63=Style 63 64=Style 64	2 = 2 ways 3 = 3 ways

* Other Number of ways are available up to 12
Please consult office for further details



TERMINAL BLOCKS

5mm PITCH PLUG IN

- 5mm pitch
- Rating 12A
- Open & Closed end headers
- UL approved
- Colour green
- Horizontal and Vertical

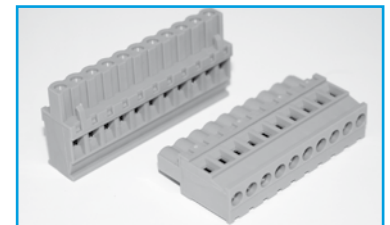
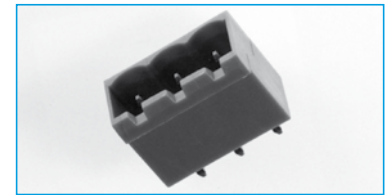
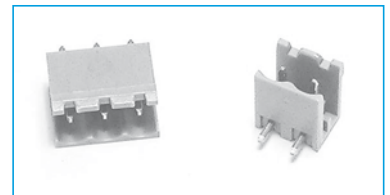
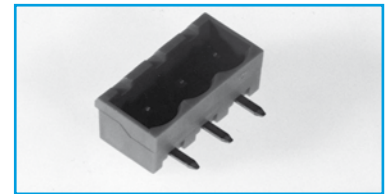
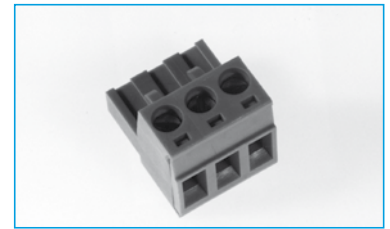
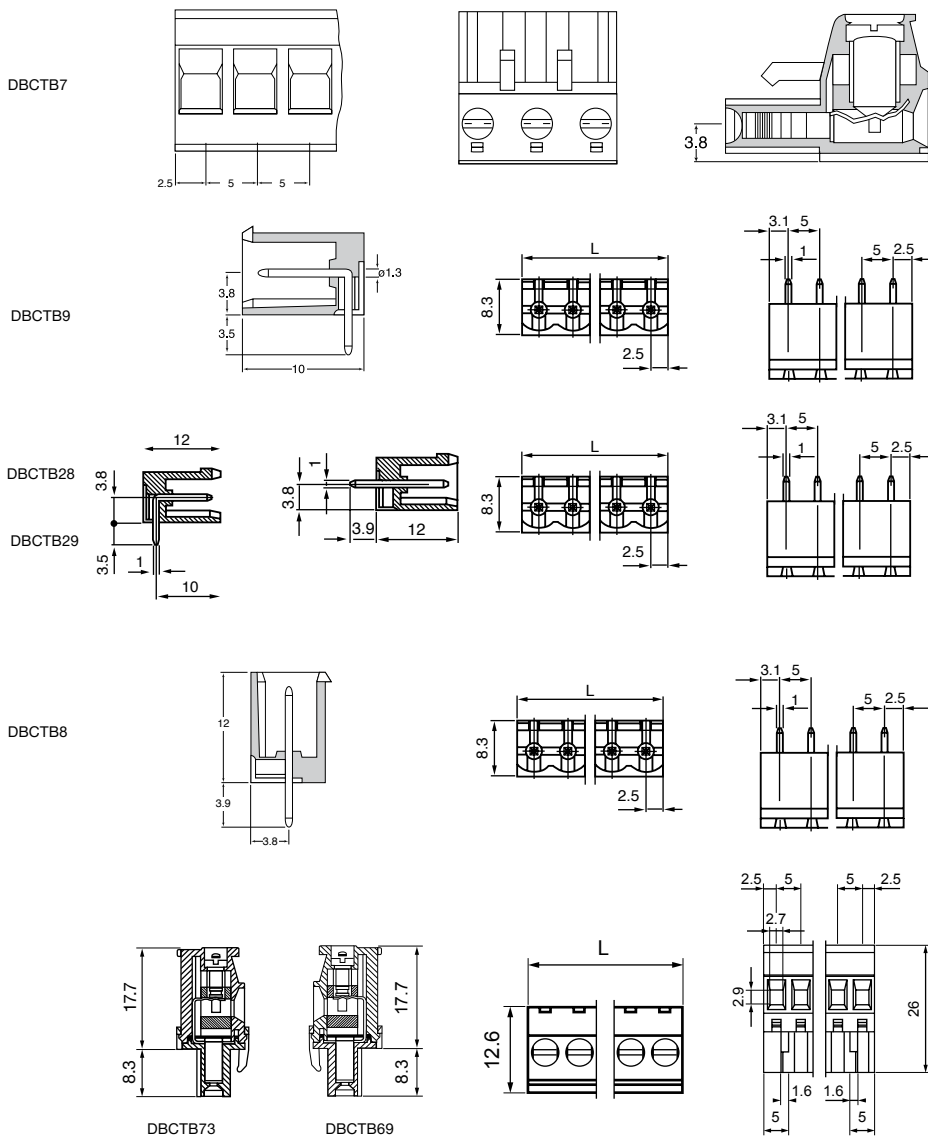
SPECIFICATION

Rating: 12A/380V
Dielectric Strength: >2.5KV
Insulation Resistance: >5MΩ

Working temperature: -20°C to 125°C
Short Period: 160°
Moulding: UL94V-0 flame retardant nylon 66

Pin/terminal: 5 micron tinned nickel plated brass
Recommended PCB hole size: ø1.4mm

OUTLINE DRAWING



ORDERING INFORMATION

DBC	TB	28	/2
Dubilier Connectors	Series Terminal Blocks	Style 7 = Female 73 = Standard vertical female 69 = Reversed vertical female 8 = Closed end straight 9 = Closed end right angle 28 = Open end straight 29 = Open and right angle	No of Ways 2 = 2ways 3 = 3ways * other number of ways are available Please consult the office for further details

SECTION 18