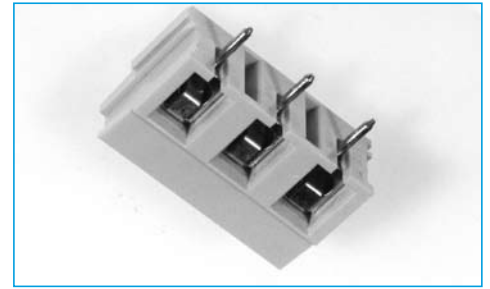


TERMINAL BLOCKS

- 5.08mm pitch
- Professional rising clamp
- 1.5mm² wire acceptance
- Rating 17.5/50V
- Colour green
- UL/CE approved
- Interlocking

5.08mm PITCH VERTICAL MOUNT

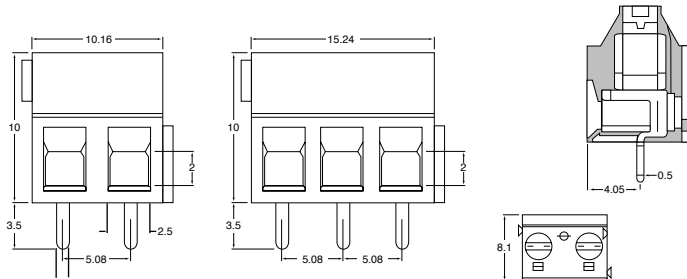


SPECIFICATION

Rating: 17.5A/250 Volts
Dielectric Strength: >2KV
Insulation Resistance: >5MΩ
Working temperature: -20°C to 125°C
Short Period: 160°
Moulding: UL94V-0 flame retardant nylon 66 (Green)

Pin/terminal: 5 micron tinned nickel plated brass
Rising clamp: Nickel plated brass
Screw/torque: M3 Zinc Steel/0.5Nm, colour passivated and tropicalised
Recommended PCB hole size: ø1.3mm²

OUTLINE DRAWING



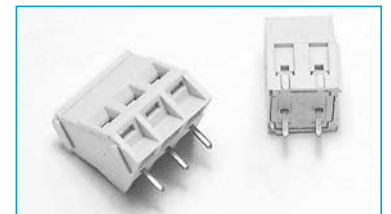
ORDERING INFORMATION

DBC	TB	13	/2
Dubilier Connectors	Series Terminal Block	Style	Nº of Ways
			2 = 2 ways 3 = 3 ways
* Other Number of ways are available up to 12 Please consult office for further details			

TERMINAL BLOCKS

- 5.08mm Pitch
- Rising Clamp Terminal
- 2 - 12 pole interlocking
- 2.5mm² wire acceptance
- UL/CE/VDE approved

5.08mm 45° PITCH RISING CLAMP

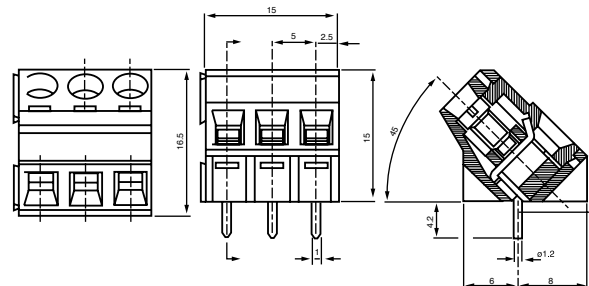


SPECIFICATION

Electrical Characteristics

Rating Current: 17.5/250V
Contact Resistance: >125kV
Insulation Resistance: ≥5mΩ
Operating Temperature: -20°C to +125°C

OUTLINE DRAWING



ORDERING INFORMATION

DBC	TB	46	/2
Dubilier Connectors	Series Terminals Blocks	Style 46 = Style 46	No of Ways
			2 = 2ways 3 = 3ways
* other number of ways are available, Please consult the office for further details			

TERMINAL BLOCKS

- 5.08mm pitch
- Professional rising clamp
- 4.00mm² wire acceptance
- Rating 24A / 450V
- CE approved
- Colour green
- Interlocking

5.08mm PITCH VERTICAL MOUNT

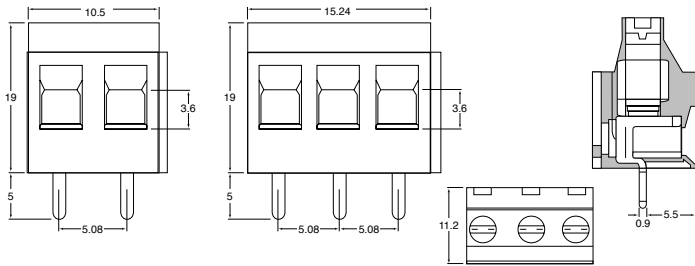


SPECIFICATION

Rating: 24A/450V
Dielectric Strength: >2.5KV
Insulation Resistance: >5MΩ
Working temperature: -20°C to 125°C
Short Period: 160°
Moulding: UL94V-0 flame retardant nylon 66(Green)

Pin/terminal: 5 micron tinned nickel plated brass
Rising clamp: Nickel plated brass
Screw/torque: M3 steel/0.5Nm 7 micron zinc colour passivated and tropicalised
Recommended PCB hole size: ø1.3mm

OUTLINE DRAWING



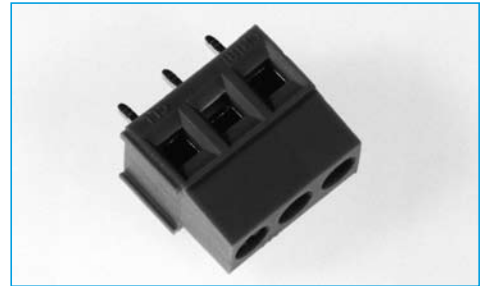
ORDERING INFORMATION

DBC	TB	15	/2
Dubilier Connectors	Series Terminal Block	Style	N° of Ways
			2 = 2 ways 3 = 3 ways
<small>* Other Number of ways are available up to 24 Please consult office for further details</small>			

TERMINAL BLOCKS

- 5.08mm pitch
- Professional rising clamp
- - Designed to prevent cable entry below clamp
- 2.5mm² wire acceptance
- UL/ CE approved
- Colour green
- Interlocking

5.08mm PITCH VERTICAL MOUNT

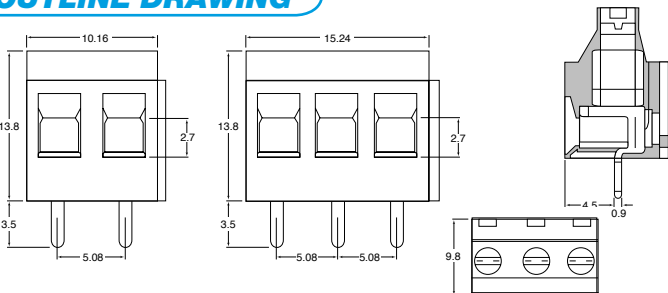


SPECIFICATION

Rating: 20A/250V
Dielectric Strength: 2.5kV
Insulation Resistance: >5MΩ
Working temperature: -20°C to 125°C
Moulding: UL94V-0 Polyamide 68
Pin/terminal: 5 micron tinned nickel plated brass

Pin Terminal: 5 micron tinned nickel plated brass
Rising clamp: Nickel plated brass
Screw/torque: M3 Zinc Steel, colour passivated and tropicalised/0.5NM
Recommended PCB hole size: ø1.3mm²

OUTLINE DRAWING



ORDERING INFORMATION

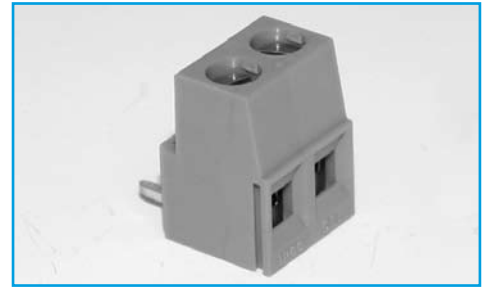
DBC	TB	17	/2
Dubilier Connectors	Series Terminal Block	Style	N° of Ways
			2 = 2 ways 3 = 3 ways



TERMINAL BLOCKS

- 5.08mm pitch
- Flame Retardant Material
- 2.5mm² wire acceptance
- UL/ CSA approved
- Interlocking
- Professional rising clamp

5.08mm PITCH 90° MOUNT

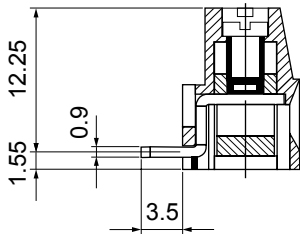


SPECIFICATION

Rating: 20A/250V
Dielectric Strength: ≥2.5KV/60sec
Insulation Resistance: ≥5MΩ
Working temperature: -20°C to 125°C
Short Period: 160°
Moulding: UL94V-0 flame retardant PA66

Pin/terminal: 5μ tinned, nickel plated brass
Wire protector: Nickel plated brass
Screw/torque: M3 steel, 6μ zinc colour passivated and tropicalised/0.5Nm
Recommended PCB hole size: ø1.3mm

OUTLINE DRAWING



ORDERING INFORMATION

DBC	TB	85	/2
Dubilier Connectors	Series Terminal Block	Style	N° of Ways
			2 = 2 ways
			3 = 3 ways

* Other Number of ways are available up to 12
 Please consult office for further details



TERMINAL BLOCKS

5.08mm PITCH PLUG IN

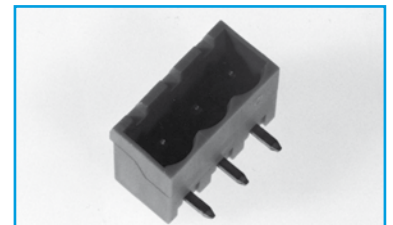
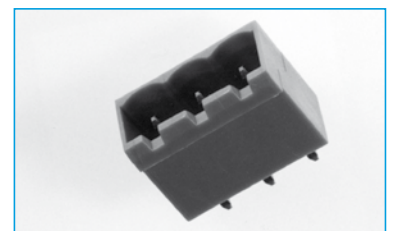
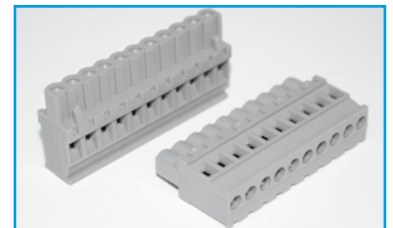
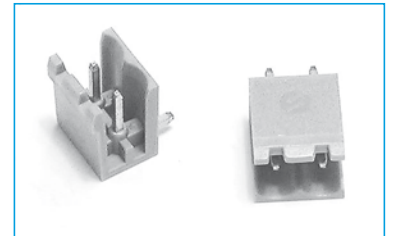
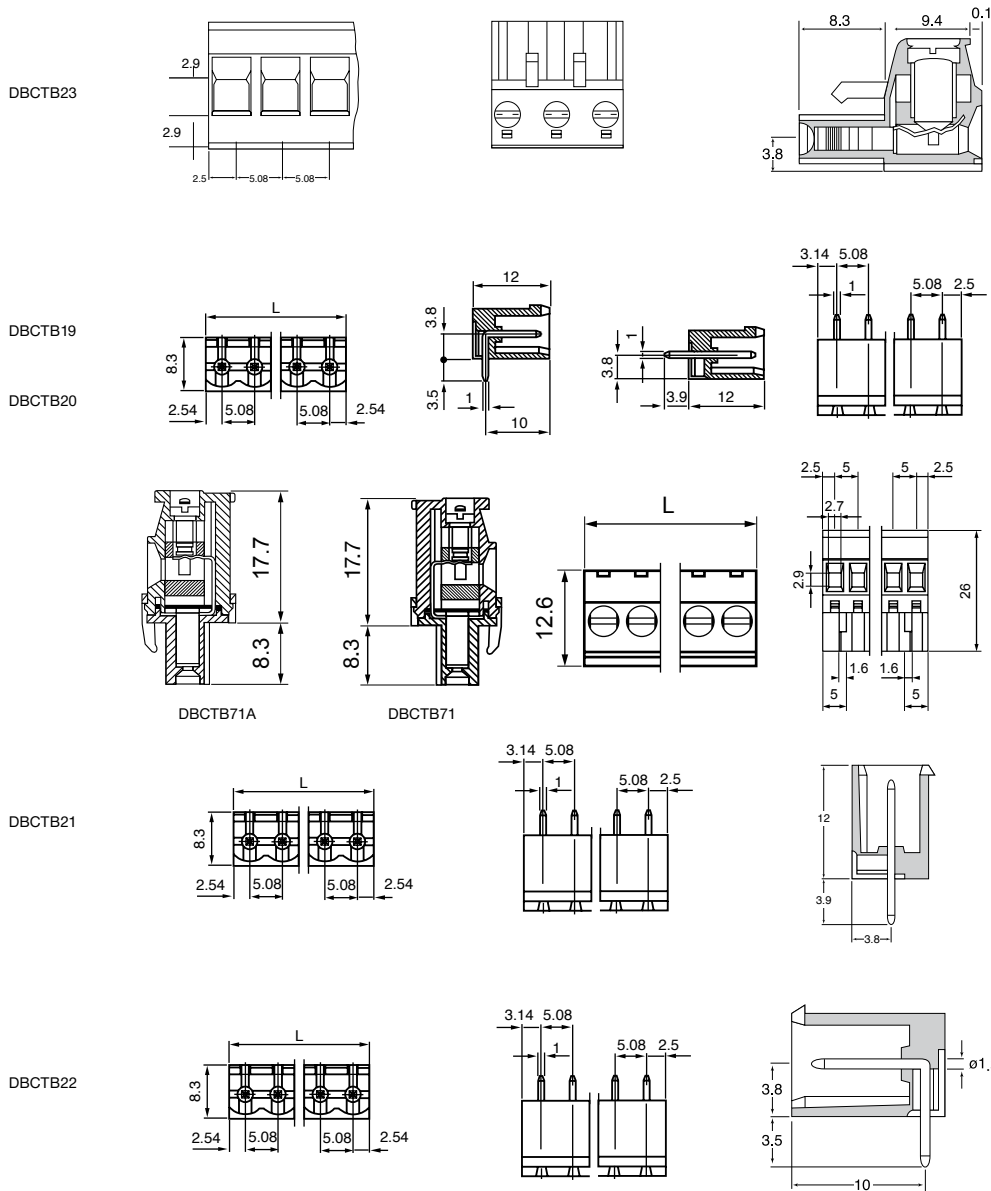
- 2-24 Pole 5.08mm pitch
- Colour green
- Horizontal and Vertical
- Open and closed headers
- Rating 12A
- UL/VDE/CE approved

SPECIFICATION

Rating: 12A/380V
Dielectric Strength: >2.5KV
Insulation Resistance: >5MΩ
Working temperature: -20°C to 125°C
Short Period: 160°

Moulding: UL94V-0 flame retardant nylon 66
Pin/terminal: 5 micron tinned nickel plated brass
Rising clamp: 5 micron Nickel brass
Screw/torque: M2 steel/0.5Nm 7 micron zinc colour passivated and tropicalised

OUTLINE DRAWING



ORDERING INFORMATION

DBC	TB	21	/2
Dubilier Connectors	Series Terminal Block	Style	N° of Ways
		19 = Open end straight	2 = 2 ways
		20 = Open end right angle	3 = 3 ways
		21 = Closed end straight	
		22 = Closed end right angle	
		23 = Female	
		71 = Standard vertical female	
		71A = Reversed vertical female	
			* Other Number of ways are available up to 24 Please consult office for further details

SECTION 18