

**CAPACITORS**

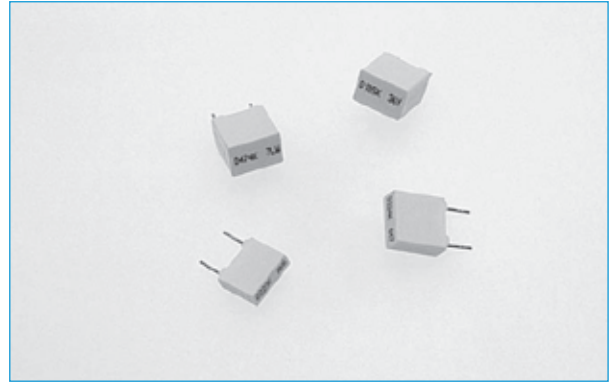
**5mm BOX POLYESTER MMP**

- Miniature sizes
- Self-healing
- Low losses
- Low inductance
- Low series resistance

Designed as a miniature general purpose decoupling capacitor, particularly for high-speed circuits.

The housing is an insulated thermoplastic moulding incorporating stand-off lugs for easy removal of solder flux.

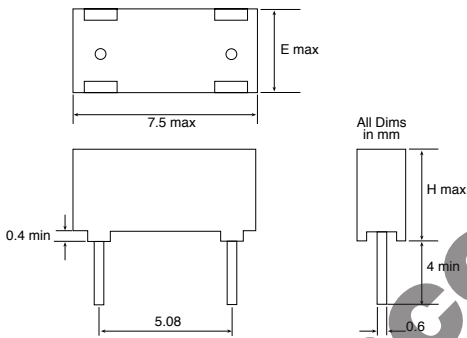
Flame retardant case and resin in accordance with UL 94VO.



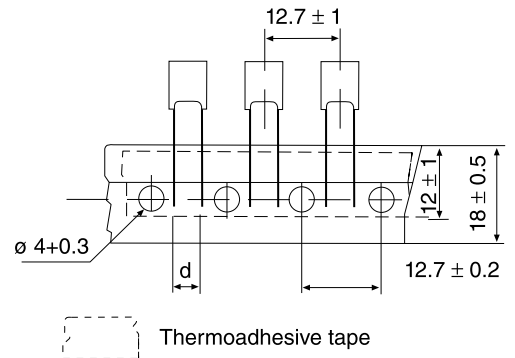
**SPECIFICATION**

<b>Temperature Range</b>	-55 to +100°C	<b>Rated Voltage</b>	63Vdc, 40Vrms @ 50Hz
<b>Capacitance Stability</b>	≤ 5% after 1000 hours @ 85°C	<b>Test Voltage</b>	1.4 x Vd.c. for 1 minute
<b>Loss angle</b>	≤ 80 x 10 <sup>-4</sup>		

**OUTLINE DRAWING**



**TAPING SPECIFICATIONS**

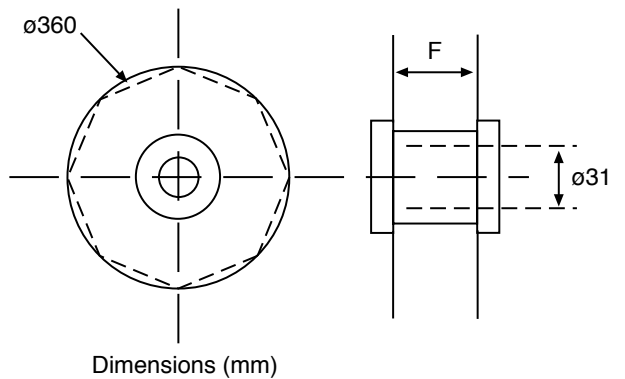


**DIMENSIONS (63v)**

Value/nf	H max/mm	E max/mm	Reel Qty	F (mm)
1-220	6.5	2.5	2500	43
270-330	8.0	3.2	1800	48
390-1000	8.0	5.0	1200	48
1500-2200	12	6.0	900	48

**MARKING**

Nominal capacitance value and tolerance in accordance with IEC 62. C voltage rating 63. The top face of the capacitor is used for marking in order to facilitate easy recognition on high component density boards.



**ORDERING INFORMATION**

MMP	10	470N	K	TR
Style	10 = 100V 25 = 250V 40 = 400V	Value nf	Tolerance  J = 5% k = 10%	Options:  TA = Tape/ Ammo-box TR = Tape/Reel Blank = Loose
	Blank 63V standard			

### CHARACTERISTICS

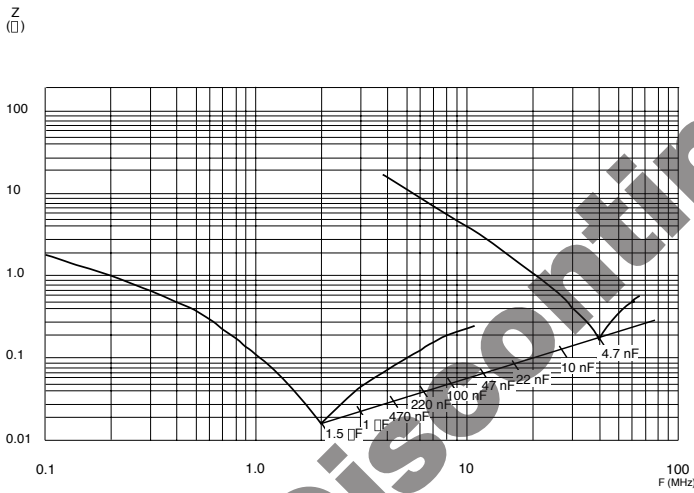
### MAX VOLTAGE GRADIENT

<b>VR- (V)</b>	63	100	250	400
<b>(dv/dt)R max</b>	38	40	110	270

<b>Climatic Category</b>	55/100/56 - Performance class 2
<b>Capacitance Range</b>	CR 1 nF to 2.2 μF (E12)
<b>Tolerances on CR</b>	± 5% ± 10% ± 20% other values on request
<b>Nominal Voltages</b>	VR- 63/100/250/400 V VR~ 40/63/160/200 V
<b>Category Voltage</b>	VC = 0.8 VR- at 100 °C
<b>Test Voltage</b>	VE = 1.6 VR-/2s at 25 °C
<b>Tangent of Loss Angle</b>	tg δ
<b>Insulation Resistance</b>	Ri

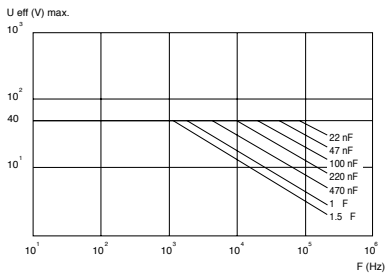
### CHARACTERISTICS CURVES

Influence of the frequency on the impedance (room temperature).

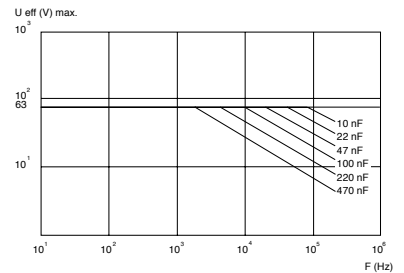


Nominal RMS voltage versus frequency (room temperature) allowing a 10 °C increase of the external temperature of the box.

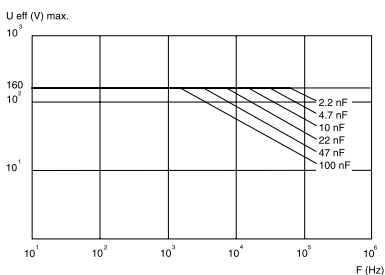
### CASES UR- : 63 V



### CASES UR- : 100 V



### CASES UR- : 250 V



### CASES UR- : 400 V

